

# MONTHLY MEMBERSHIP PROGRESS REPORT

LOCATION WEST VIRGINIA

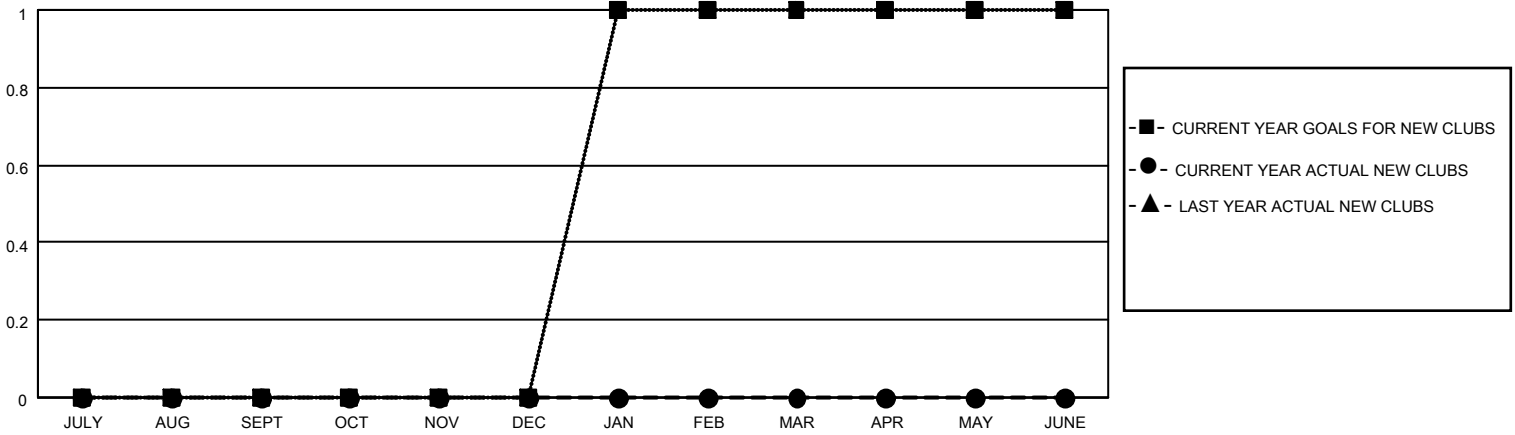
District 29 L

Results as of: 7/31/2020

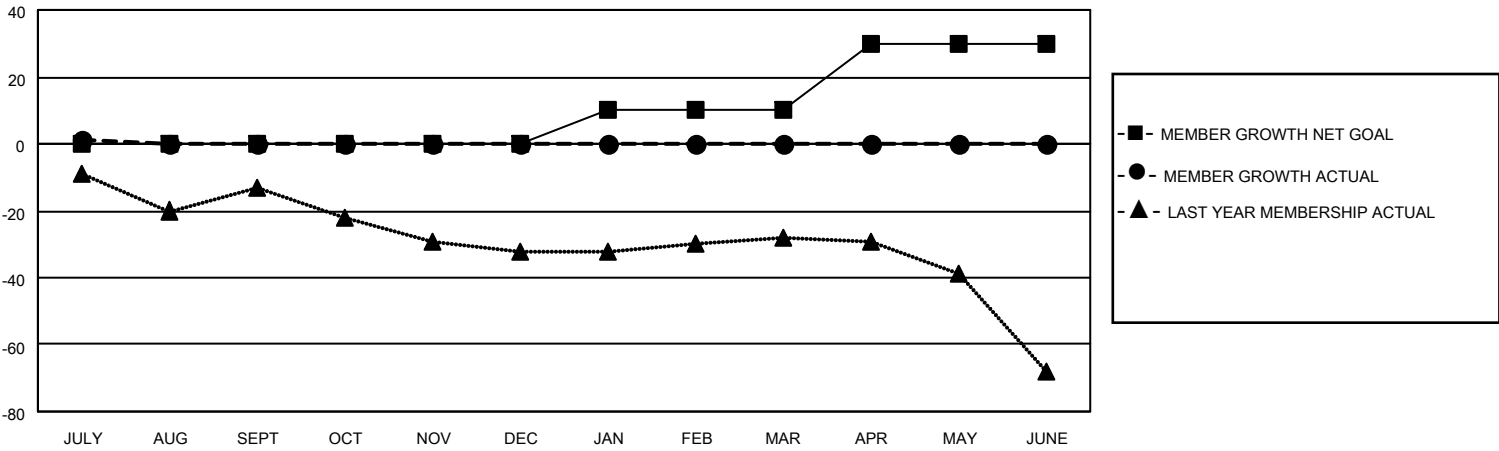
Clubs			
RESULTS FOR 2020-2021			
QUARTER	NEW CLUB GOAL	NEW CLUBS	DROPPED CLUBS
JULY/AUG/SEPT	0	0	0
OCT/NOV/DEC	0	0	0
JAN/FEB/MAR	1	0	0
APR/MAY/JUNE	0	0	0

Members			
RESULTS FOR 2020-2021			
QUARTER	MEMBER GROWTH NET GOAL	MEMBER GROWTH ACTUAL	DROPPED MEMBERS ACTUAL (including transfers)
JULY/AUG/SEPT	0	8	5
OCT/NOV/DEC	0	0	0
JAN/FEB/MAR	10	0	0
APR/MAY/JUNE	20	0	0

**GOALS AND ACTUAL NEW CLUBS CUMULATIVE**



**GOALS AND ACTUAL MEMBERS CUMULATIVE**



DROPPED CLUBS: 0	4 CLUBS OF 54 ADDED 1 OR MORE NEW MEMBERS	<b>GENDER DISTRIBUTION</b>
<b>DROPPED MEMBERS</b>		MALE            753 (62.91%)
DECEASED            2		FEMALE        444 (37.09%)
CLUB CANCELLED    0	<a href="#">CLICK HERE FOR CUMULATIVE MEMBERSHIP DATA</a>	TOTAL FAMILY UNIT MEMBERS            374
OTHER                3		FAMILY MEMBERS PAYING HALF DUES            194
<b>TOTAL                5</b>		